

Lantana Village Square

1301-1499 S. Dixie Highway, Lantana FL 33465

For Leasing info:

Lysdel Tellez

Anahi Quino

305-704-3193

305-704-3104

lysdel@saglo.com

anahi@saglo.com

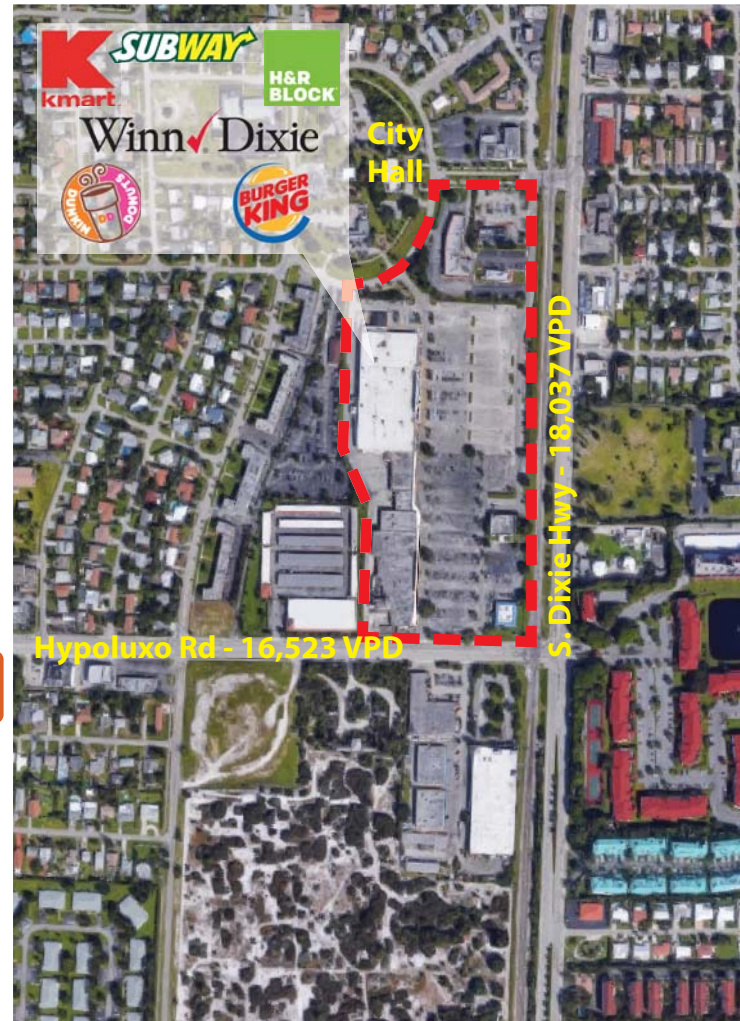


Unique Attributes

- Located at the northwest corner of Hypoluxo Rd and US Hwy 1 in Palm Beach County.
- Anchored by a high-performing Winn-Dixie, and Kmart. Neighboring out-parcels include Dunkin' Donuts, Bank of America, and Burger King.
- Close proximity to Interstate 95 and A1A.
- Across from Aura Seaside, a luxury apartment development of 250 units – scheduled to open 4th quarter of 2017.
- Adjacent to another development site of 9,600 SF of retail space and 50 residential units.
- 1 mile south of Water Tower Commons, a 73-acre mixed use development project consisting of over 300,000 SF of retail space, and over 1,000 residential units. Completion is scheduled for end of 2017.
- Space availability ranges from 1,237 – 9,225 SF

Size of Center	164,980 SF
Daily Traffic	34,500 Cars
Parking	347 spaces (5.36/1000)

Area Map



Estimated 2017 Demographics

	1 MILE	2 MILES	3 MILES
2017 Estimated Total Population	12,762	36,662	80,695
Est. Population Growth 2016-2021	5.11%	5.75%	5.87%
Average Household Income	\$81,298	\$70,077	\$66,871
Average Age	40	42	40

Lantana Village Square

1301-1499 S. Dixie Highway, Lantana FL 33465

For Leasing info:

Lysdel Tellez Anahi Quino
 305-704-3193 305-704-3104
 lysdel@saglo.com anahi@saglo.com

SAGLO

Space Availability	
Unit	Size
1389	9,225 SF
1385	2,018 SF
1323	1,600 SF
473	1,492 SF
477	1,237 SF

Key

- Dumpster
- Available
- Not in Center (NIC)
- ⇄ Ingress/Egress
- Ⓚ Pylon

