

Lantana Village Square

1301-1499 S. Dixie Highway, Lantana FL 33462

For Leasing info:
Aniley Perez
305-704-3193
aniley@saglo.com

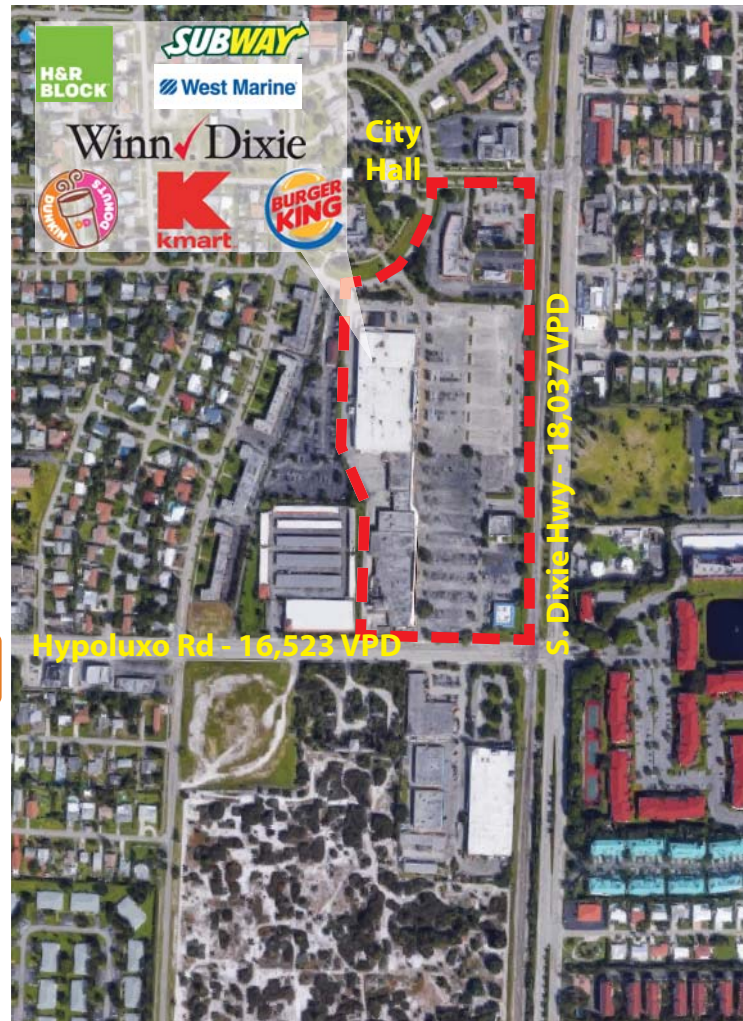


Unique Attributes

- Located at the NW corner of Hypoluxo Rd and S Dixie Hwy in Palm Beach County.
- Anchored by high performing Winn-Dixie, Kmart, and West Marine. Neighboring out-parcels include Dunkin' Donuts, Bank of America, and Burger King.
- Close proximity to Interstate 95 and A1A.
- Across from Aura Seaside, newly developed 250 luxury apartments.
- Adjacent to another development site of 9,600 SF of retail space and 50 residential units.
- 1 mile south of Water Tower Commons, a 73-acre mixed use development project consisting of over 300,000 SF of retail space, and up to 1,100 units.
- Space availability ranges from 1,237 – 3,218 SF

Size of Center	164,980 SF
Daily Traffic	35,400 Cars
Parking	347 spaces (5.36/1000)

Area Map



Estimated 2019 Demographics

	1 MILE	2 MILES	3 MILES
2019 Estimated Total Population	13,852	41,996	88,355
Est. Annual Growth 2019-2024	1.1%	1.3%	1.2%
Average Household Income	\$78,322	\$66,169	\$64,153
Total Annual Household Expenditures	\$256M	\$1.74M	\$4.59B

Space Availability

Unit	Size
1385	2,018 SF
457	2,000 SF
461	3,000 SF
471	980 SF
473	1,492 SF
477	1,237 SF

Key

- Dumpster
- Available
- Not in Center (NIC)
- ⇄ Ingress/Egress
- Ⓚ Pylon

