

# Commonwealth Shopping Center

1020 Edgewood Avenue, Jacksonville, Florida 32254

For Leasing Info:

Kalayah Sargeant

(305) 704-3163

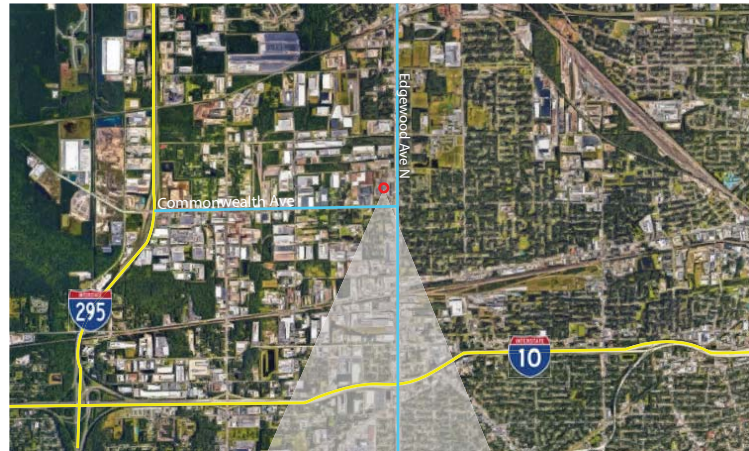
kalayah@saglo.com



## Unique Attributes

## Area Map

- Commonwealth Shopping Center is located at the intersection of Edgewood Avenue and Commonwealth Avenue in close proximity to the I-10 and I-295 interchanges.
- Join Dollar Tree, Rowe's IGA, Hibbett Sporting Goods, and Pizza Hut.
- Space Available of 1,280 SF, 4,800 SF and 1,680 SF.
- Ground Lease or Build to Suit opportunities available in out parcels.



Size of Center	75,100 SF
Daily Traffic Count	37,000 at intersection
Parking	376 spaces (4.38/1000)

## Estimated 2020 Demographics

	1 MILE	3 MILES	5 MILES
2020 Estimated Total Population	4,792	56,340	159,828
Est. Annual Population Growth 2020-2025	2.3%	2.1%	1.9%
Average Household Income	\$36,778	\$45,260	\$53,031
Median Age	34.4	37.1	38.8
Daytime Population	7,972	58,456	205,804



SAGLO  
Last Updated:  
2/4/2021



Commonwealth Ave (10,600 VPD)

Edgewood Ave N (24,000 VPD)

4.48 Acres

1.53 Acres

1012  
48,997 SF

- ATL Deli 1,100 SF
- Available 1,000 SF
- Available 1,200 SF
- Pizzeria 1,645 SF
- Top China 1,645 SF
- Nail Salon 975 SF
- Advance America 975 SF
- Jackson Hewitt 975 SF
- DOLLAR TREE 9,900 SF
- Sheriff's Office 1,680 SF
- Available 4,800 SF
- Coin Laundry 2,000 SF
- HIBBETT SPORTS 5,120 SF