

Dunn Village Shopping Center

6765 Dunn Ave, Jacksonville, FL 32219 | Duval County

For Leasing info:

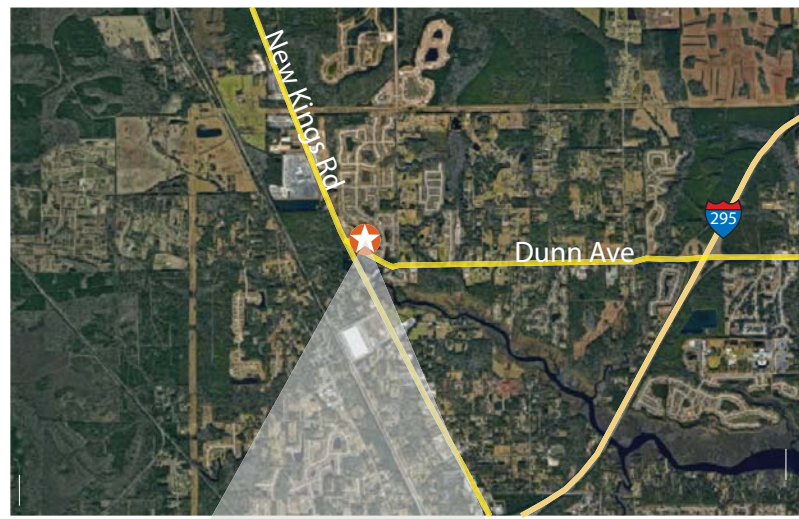
Carlos Guzman Kalayah Sargeant
 305-704-3112 305-704-3163
 carlos@saglo.com kalayah@saglo.com



Unique Attributes

- Dunn Village is located at the intersection of Dunn Avenue and New Kings Road (US 1).
- Anchored by a strong performing Rowe's IGA Supermarket.
- Highly visible from road and no other retail centers in community.
- Outparcels available for ground lease or sale.
- Jr Box space available of up to 10,000 sf.
- Close to I-295, new Amazon center, new Baptist medical campus, new construction residential communities, FSC North campus, & 3 major car auctions with 2,000 visitors weekly.

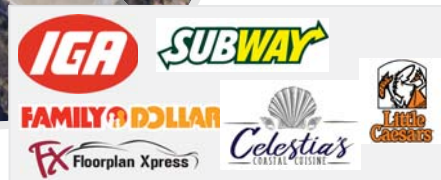
Area Map



Size of Center	72,728 SF
Daily Traffic Count	42,000 Cars
Parking	377 (5.18/1,000 SF)

2020 Demographics

	1 MILE	3 MILES	5 MILES
2020 Estimated Total Population	2,359	15,892	47,088
Est. Annual Population Growth 2020-2025	3.5%	4%	5%
Average Household Income	\$61,732	\$57,508	\$52,397
Median Age	34.2	37.2	38.9





Last Updated:
12/18/2020



SUBWAY B-330 1,800 SF	BEAUTY SUPPLY B-329 1,200 SF	Theraplan Xpress B-328 1,200 SF	ARBE BAKING B-327 1,200 SF	AVAILABLE B-326 1,200 SF	TAX SERVICES B-325 1,200 SF	HOT WOK B-324 1,200 SF	NAILS B-323 1,200 SF	LIQUORS B-322 1,200 SF	FAMILY DOLLAR C-318 8,000 SF	AVAILABLE D-317 1,200 SF	BARBERSHOP D-316 1,200 SF	Rowe's SUPERMARKETS D-306 34,928 SF	AVAILABLE F-301 10,000 SF	G-205 1,200 SF DRY	G-204 1,200 SF CLEANING	AVAILABLE G-203 1,200 SF	G-201 2,400 SF Celestia's
------------------------------------	---	--	---	---------------------------------------	--	-------------------------------------	-----------------------------------	-------------------------------------	---	---------------------------------------	--	--	--	--	---	---------------------------------------	---



Key

- Dumpster
- Available
- Not in Center (NIC)
- Ingress/Egress
- Traffic Light
- Pylon