

# West Hollywood

5727 Hollywood Boulevard, Hollywood, FL 33021

For Leasing info:  
Michele Hanash  
305-902-8158  
mh@saglo.com



## Unique Attributes

- Direct visibility to Hollywood Blvd, the busiest street in the trade area.
- Across from an extremely busy, newly constructed Walmart Supercenter plaza with co-tenants such as Ross Dress for Less and Discovery Clothing. Underserved market with a strong presence of national chains in the immediate area.
- Approx. 49' wide, 60' deep, & 8.2' height (10.8' to the deck).
- 2,900 SF vanilla shell space available.

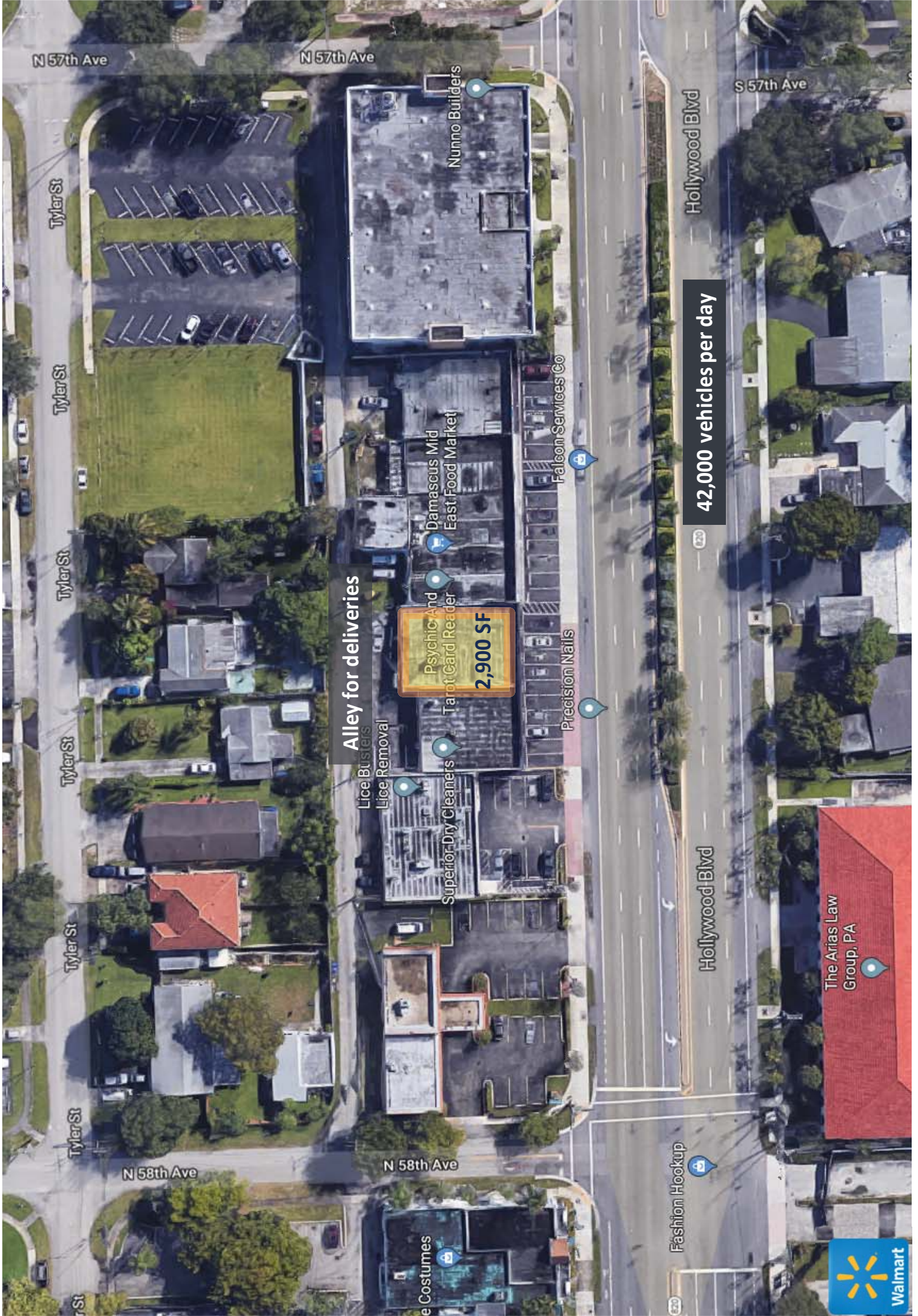
Size of Center	5,674 SF
Daily Traffic	42,000 Cars
Parking	20 (3.5/1,000 SF)

## Area Map



## 2018 Demographics

	1 MILE	3 MILES	5 MILES
2018 Estimated Total Population	21,623	182,168	469,946
Est. Population Growth 2018-23	5.8%	5.4%	5.5%
Average Household Income	\$61,654	\$65,458	\$65,641
Number of Employees	7,157	68,401	180,919
Average Age	38.5	38.6	38.7



**Alley for deliveries**

Psychic And  
Tarot Card Reader  
**2,900 SF**

**42,000 vehicles per day**