

Dunn Village Shopping Center

6765 Dunn Ave, Jacksonville, FL 32219 | Duval County

For Leasing info:

Kalayah Sargeant

305-704-3163

kalayah@saglo.com

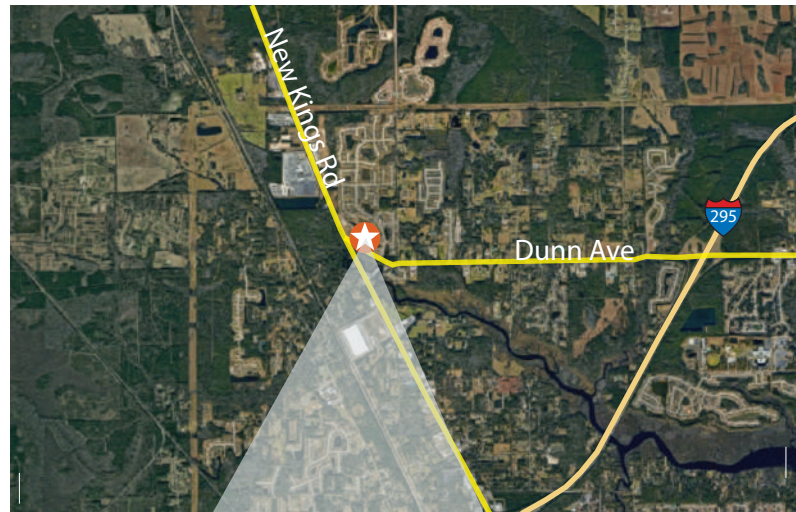


Unique Attributes

- Dunn Village is located at the intersection of Dunn Avenue and New Kings Road (US 1).
- Anchored by a strong performing Rowe's IGA Supermarket.
- Highly visible from road and no other retail centers in community.
- Outparcels available for ground lease or sale.
- Jr Box space available of up to 10,000 sf.
- Close to I-295, new Amazon center, new Baptist medical campus, new construction residential communities, FSC North campus, & 3 major car auctions with 2,000 visitors weekly.

Size of Center **72,728 SF**
 Daily Traffic Count **40,500 Cars**
 Parking **377 (5.18/1,000 SF)**

Area Map



2021 Demographics

	1 MILE	3 MILES	5 MILES
2021 Estimated Total Population	2,903	17,453	48,716
Est. Annual Population Growth 2021-2026	2.0%	1.7%	1.1%
Average Household Income	\$60,730	\$58,208	\$56,658
Median Age	34.9	37.6	39.5





B-330 1,800 SF SUBWAY	B-329 1,200 SF BEAUTY SUPPLY	B-328 1,200 SF Nourish Agency	ARBLE BAKING	B-326-327 2,400 SF	B-325 1,200 SF TAX SERVICES	B-324 1,200 SF HOT WOK	B-323 1,200 SF NAILS	B-322 1,200 SF LIQUORS	C-318 8,000 SF FAMILY DOLLAR	D-317 1,200 SF D-316 1,200 SF BARBERSHOP	D-306 34,928 SF	F-301 6,200 SF	F-301A 3,444 SF	G-205 1,200 SF RESTAURANT	G-204 1,200 SF JAMAICAN	G-203 1,200 SF HAIR	G-201 2,400 SF Celestia's BRAIDING
------------------------------------	------------------------------------	-------------------------------------	--------------	-----------------------	-----------------------------------	------------------------------	----------------------------	------------------------------	---	--	--------------------	-------------------	--------------------	---------------------------------	-------------------------------	---------------------------	---



Key

- Dumpster
- Available
- Not in Center (NIC)
- Ingress/Egress
- Traffic Light
- Pylon