

# Dunn Village Shopping Center

6765 Dunn Ave, Jacksonville, FL 32219 | Duval County

For Leasing info:

Kalayah Sargeant

305-704-3163

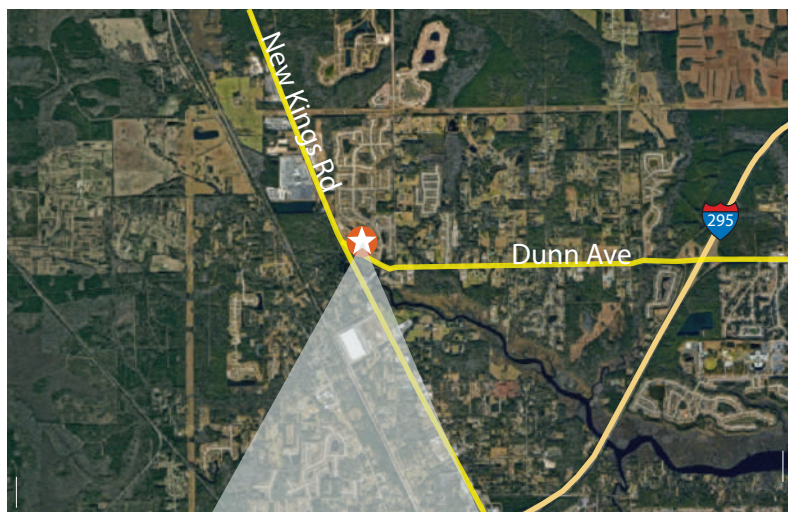
kalayah@saglo.com



## Unique Attributes

- Dunn Village is located at the intersection of Dunn Avenue and New Kings Road (US 1).
- Anchored by a strong performing Rowe's IGA Supermarket.
- Highly visible from road and no other retail centers in the community.
- Outparcels available for ground lease or sale.
- Close to I-295, new Amazon center, new Baptist medical campus, new construction residential communities, FSC North campus and 3 major auctions with 2,000 visitors weekly.

## Area Map



Size of Center	<b>72,728 SF</b>
Daily Traffic Count	<b>40,500 Cars</b>
Parking	<b>377 (5.18/1,000 SF)</b>

## 2022 Demographics

	1 MILE	3 MILES	5 MILES
2022 Estimated Total Population	2,821	18,370	50,920
Est. Annual Population Growth 2022-2027	0.5%	0.7%	1.2%
Average Household Income	\$80,328	\$57,296	\$55,750
Median Age	34.3	37.5	38.9





Last Updated:  
01/26/2023



<b>SUBWAY</b> B-330 1,800 SF	BEAUTY SUPPLY B-329 1,200 SF	<b>Mountain Market</b> B-328 1,200 SF	APPLE BAKING B-326-327 2,400 SF	<b>1,200 SF</b> B-325	HOT WOK B-324 1,200 SF	NAILS B-323 1,200 SF	LIQUORS B-322 1,200 SF	<b>FAMILY DOLLAR</b> C-318 8,000 SF	<b>1,200 SF</b> D-317	BARBERSHOP D-316 1,200 SF	<b>Rowley's SUPERMARKETS</b> D-306 34,928 SF	<b>petsense</b> F-301 6,200 SF	<b>3,800 SF</b> F-301A	G-205 1,200 SF <b>WALKER'S</b>	JAMAICAN RESTAURANT G-204 1,200 SF	HAIR G-203 1,200 SF	G-201 2,400 SF <b>Celestia's</b>
------------------------------------	---------------------------------	---	------------------------------------	--------------------------	---------------------------	-------------------------	---------------------------	---	--------------------------	------------------------------	--	--------------------------------------	---------------------------	--------------------------------------	---------------------------------------	------------------------	--



**Key**

- Dumpster
- Available
- Not in Center (NIC)
- Ingress/Egress
- Traffic Light
- Pylon