

Jack's Shopping Center & Elie's Corner

9800 - 9898 SW 40th Street, Miami, FL 33165 | Miami-Dade County

For Leasing info:

Luis Nazario
(305) 582-8270
luis@saglo.com



Unique Attributes

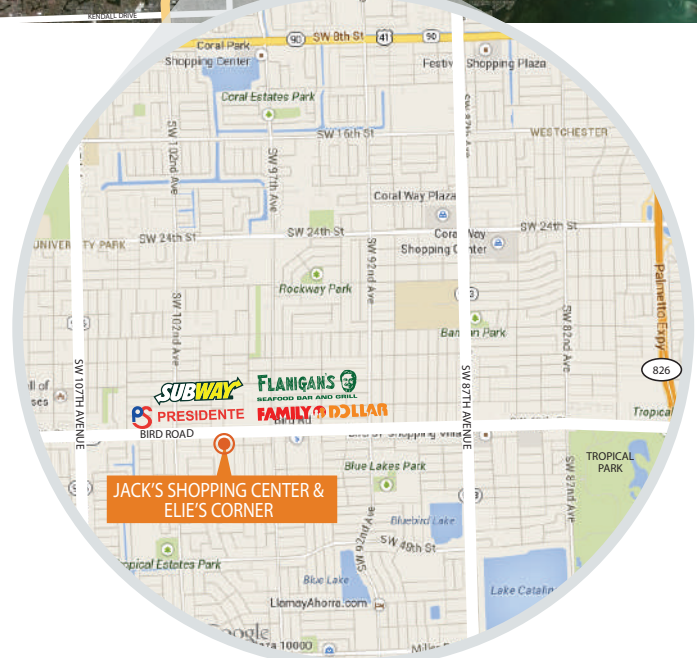
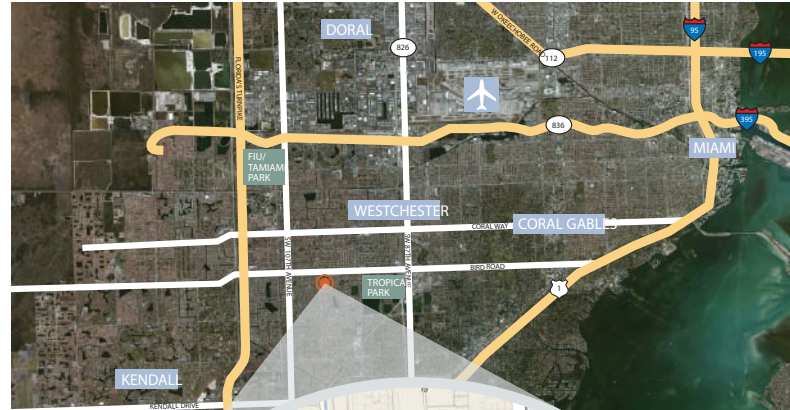
- Jack's Shopping Center provides unobstructed visibility and exposure to Bird Road.
- Bird Road is a heavily traveled East/West thoroughfare with access to Florida Turnpike, Palmetto Expressway.
- Conveniently located in close proximity to Kendall Regional Medical Center, the 275 acre urban Tropical Park, and Southwest Miami Senior High (3,200 students).
- Bird Road is a very successful retail corridor supported by a highly dense populated area.
- Bank of America brings approximately 3,000 customers to the property on a monthly basis.

Size of Center **36,361 SF**

Daily Traffic Count **48,400 Cars**

Parking **132 (3.63/1,000 SF)**

Area Map



2022 Estimated Demographics

	1 MILE	3 MILES	5 MILES
2022 Est. Total Population	23,122	178,646	468,797
2022 Est. Households	7,281	60,229	165,601
Average Household Income	\$85,009	\$86,501	\$89,283
% Hispanic Population	86.0%	80.6%	76.5%
Median Age	46.9	45.4	43.9



SAGLO
Last Updated:
02/06/2023

Door Finishing	4030	1,404 SF
Medical Center	4020	1,680 SF
Meat Market	9800	1,495
	9836	1,320 SF
Sarussi Cafe	9810	771 SF
Electrolux	9804	1,963 SF
Medical Center	9838	2,961 SF
Door Finishing	9840	930 SF
Dentist	9842	923 SF
Sushi Bombs	9844	1,048 SF
Eye Doctor	9846	1,972 SF
Nail Spa	9848	1,909 SF
edible arrangements	9860	1,364 SF
Pincho	9864	728 SF
Jewelers	9868	3,096 SF
Rio Cristal Restaurant	9890	1,080 SF
Hair Salon	9880	780 SF
Insurance	9884	2,123 SF
Women's Apparel	9890	980 SF
Verizon	9892-9894	1,960 SF
Centrum Health	9898	5,874 SF
Bank of America	9898	5,874 SF

SUBWAY

FAMILY DOLLAR

PS SUPERMARKET