

Dunn Village Shopping Center

6765 Dunn Ave, Jacksonville, FL 32219 | Duval County

For Leasing info:

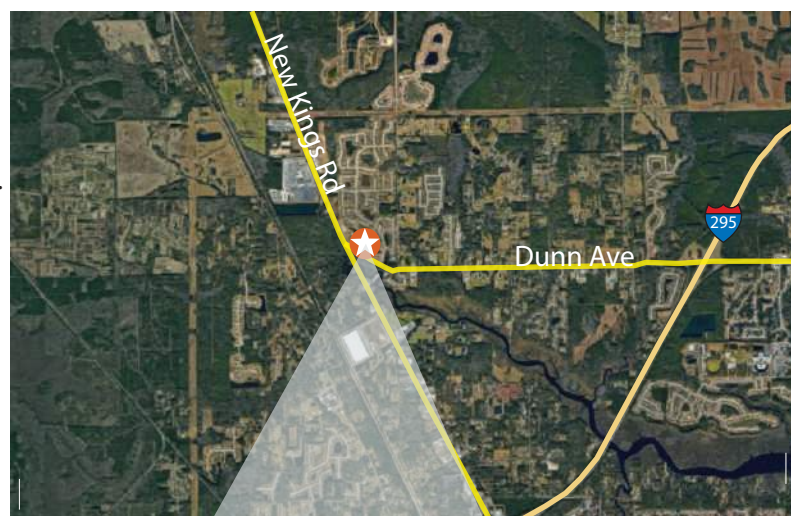
Luis Nazario
305-582-8270
luis@saglo.com



Unique Attributes

- Dunn Village is located at the intersection of Dunn Avenue and New Kings Road (US 1).
- Anchored by a strong performing Rowe's IGA Supermarket.
- Highly visible from road and no other retail centers in the community.
- Outparcels available for ground lease or sale.
- Close to I-295, new Amazon center, new Baptist medical campus, new construction residential communities, FSC North campus and 3 major auctions with 2,000 visitors weekly.

Area Map



Size of Center **72,728 SF**
 Daily Traffic Count **40,500 Cars**
 Parking **377 (5.18/1,000 SF)**

2023 Demographics

	1 MILE	3 MILES	5 MILES
2023 Estimated Total Population	2,806	18,368	51,404
Est. Annual Population Growth 2023-2028	0.4%	1.2%	1.7%
Average Household Income	\$106,241	\$74,035	\$72,189
Median Age	34.4	37.6	38.9





Last Updated:
02/20/23



	B-330 1,800 SF	BEAUTY SUPPLY	B-329 1,200 SF		B-328 1,200 SF	APPLE BAKING	B-326-327 2,400 SF		B-325 1,200 SF	HOT WOK	B-324 1,200 SF	NAILS	B-323 1,200 SF	LIQUORS	B-322 1,200 SF	FAMILY DOLLAR	C-318 8,000 SF	1,200 SF	D-317	BARBERSHOP	D-316 1,200 SF		D-306 34,928 SF	F-301 6,393 SF	3,607 SF	F-301A		G-205 1,200 SF	JAMAICAN RESTAURANT	G-204 1,200 SF	HAIR	G-203 1,200 SF	CELESTIA'S	G-201 2,400 SF
--	-------------------	---------------	-------------------	--	-------------------	--------------	-----------------------	--	-------------------	---------	-------------------	-------	-------------------	---------	-------------------	----------------------	-------------------	-----------------	-------	------------	-------------------	--	--------------------	-------------------	-----------------	--------	--	-------------------	---------------------	-------------------	------	-------------------	------------	-------------------



Key

- Dumpster
- Available
- Not in Center (NIC)
- Ingress/Egress
- Traffic Light
- Pylon